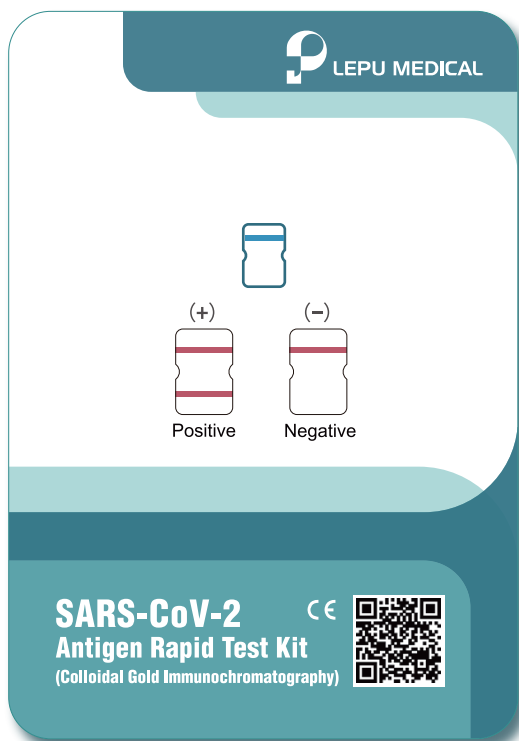


# SARS-CoV-2

## Antigen Rapid Test Kit

(Colloidal Gold Immunochromatography)

CE



- ① Non-invasive
- ② Simple to use
- ③ Convenient, no devices required
- ④ Rapid, get result in 15 minutes
- ⑤ Stable, with high accuracy
- ⑥ Inexpensive, cost-efficiency



Hospital



Test Site



Airport



Station



Hotel

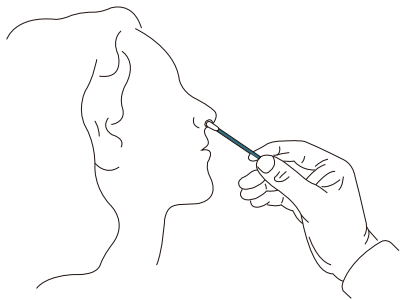


Corporation

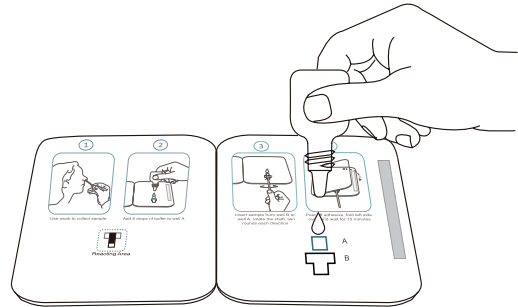
Mass  
Screening



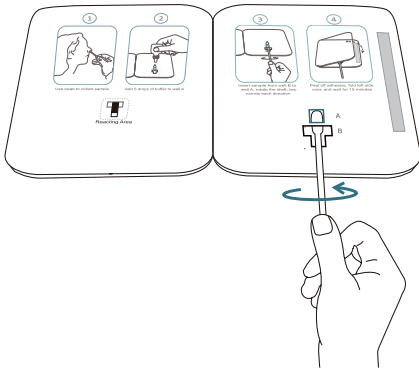
## Instruction



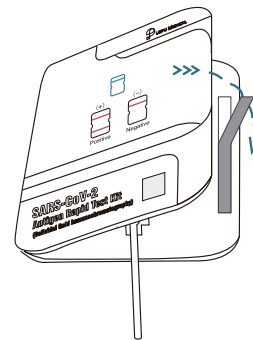
Step 1: Use swab to collect sample.



Step 2: Add 5 drops of buffer to well A.



Step 3: Insert the sample through well B to well A, rotate the shaft clockwise first and counterclockwise, twice each.



Step 4: Peel off the adhesive, fold the left side over, and wait for 15 minutes.



## Result Interpretation

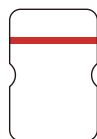
Positive

(+)

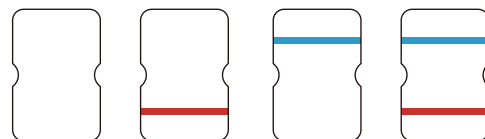


Negative

(-)



Invalid



**BEIJING LEPU MEDICAL TECHNOLOGY CO., LTD.**

Building 7-1 No.37 Chaoqian Road, Changping District, Beijing, 102200, P.R.China

Tel: +86-10-8012 3964

Email: [lepuservice@lepumedical.com](mailto:lepuservice@lepumedical.com)

Web: [en.lepumedical.com](http://en.lepumedical.com)