



ÉCOLE  
INTERNATIONALE  
Differdange &  
Esch-sur-Alzette

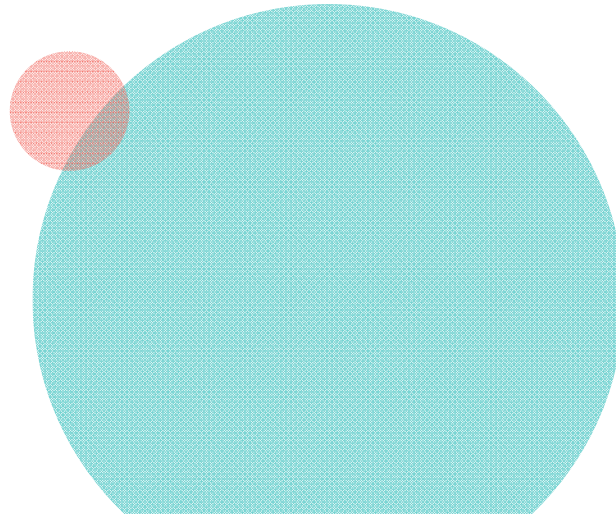
French, English and  
German sections  
Primary to European  
baccalaureate

# Essential elements of the pedagogical concept

- Multilingual education in a **multicultural** environment
- **Differentiated** education adapted to each student, his talents and capacities
- Education promoting values of **respect** and openness to the world
- Education emphasizing the **European idea**



25/01/2019



**EI** ÉCOLE  
INTERNATIONALE  
Differdange &  
Esch-sur-Alzette

 LE GOUVERNEMENT  
DU GRAND-DUCHÉ DE LUXEMBOURG  
Ministère de l'Éducation nationale,  
de l'Enfance et de la Jeunesse

# An international state school

## A state school:

- Free of charge (no application or tuition fees)
- Education for all

## An international school:

- European Schools syllabus
- Accredited European baccalaureate recognised in all EU countries



# An international state school

## An innovative school:

- Valuing of cultural differences and talents
- School trips
- Educational exchanges with national and European schools



25/01/2019

**EI** ÉCOLE  
INTERNATIONALE  
Differdange &  
Esch-sur-Alzette

 LE GOUVERNEMENT  
DU GRAND-DUCHÉ DE LUXEMBOURG  
Ministère de l'Éducation nationale,  
de l'Enfance et de la Jeunesse

# A full-time school

## Open

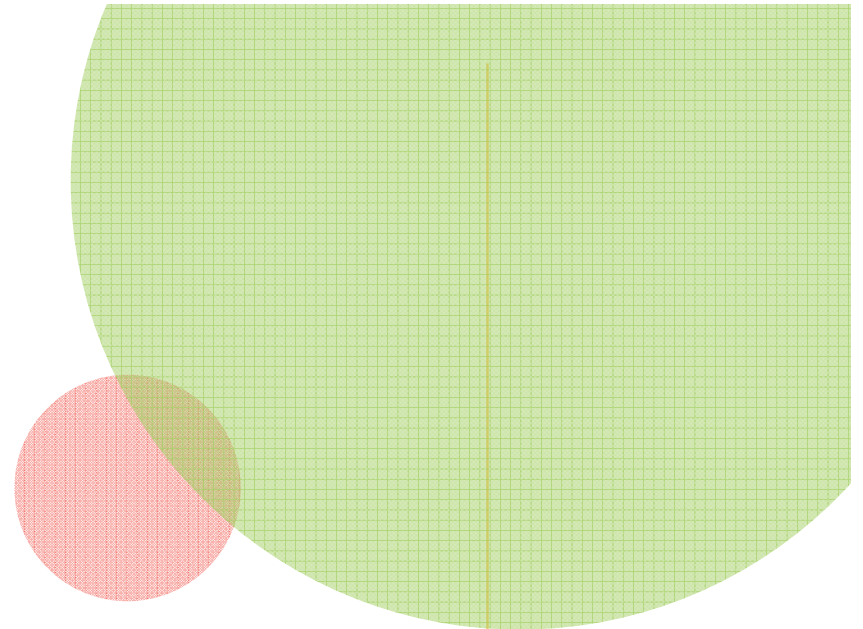
- From Monday to Friday:  
from 6.30 a.m. to 7 p.m. (primary)

## Compulsory classes

- 8 a.m. to 3.45 p.m.
- Friday until 2 p.m.

## Extracurricular activities

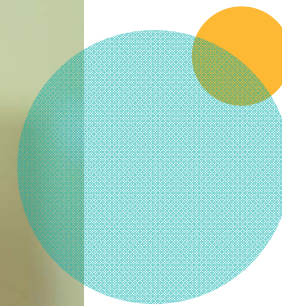
- Every day at lunch time
- Monday to Thursday: from 4 p.m. to 6 p.m.
- Friday: from 2 p.m. to 6 p.m.





# A full-time school

Supervised study halls  
accessible outside school hours



# School offer

<b>Primary</b>	P1-P5	5 years
<b>Secondary</b>	S1-S7	7 years
<b>Preparatory way</b>	VP1-VP3	3 years
<b>Integration classes</b>	ACCU	1 year



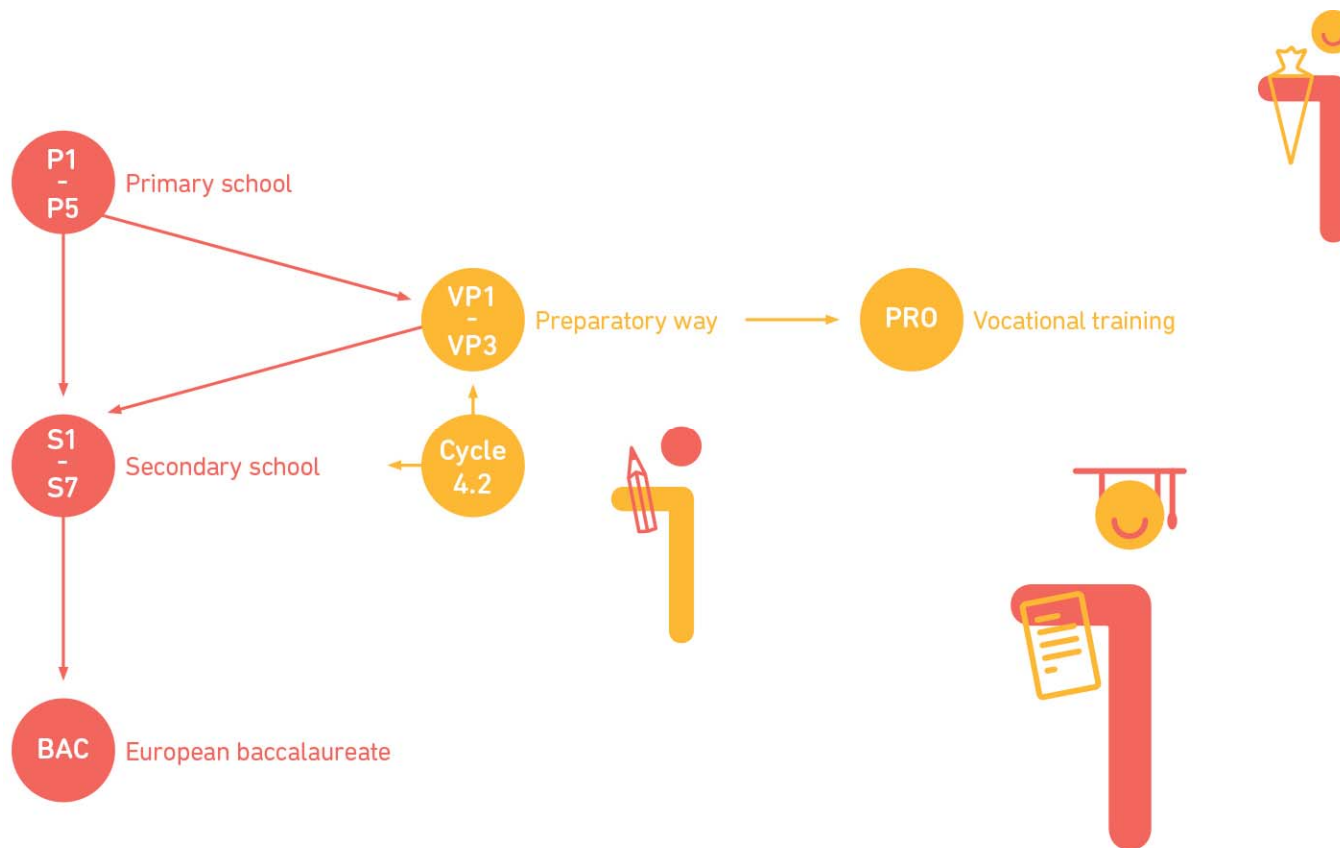
25/01/2019

7



**EIDE.LU**

# A school for everyone

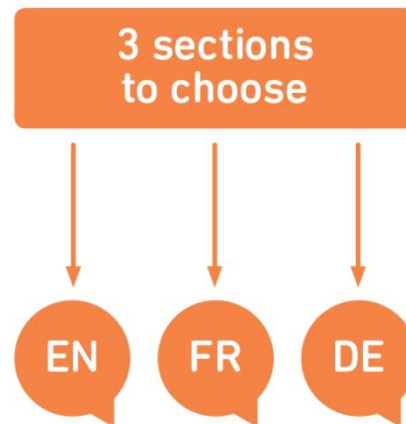




# The languages and lingua franca choice

## 1. Choose the section

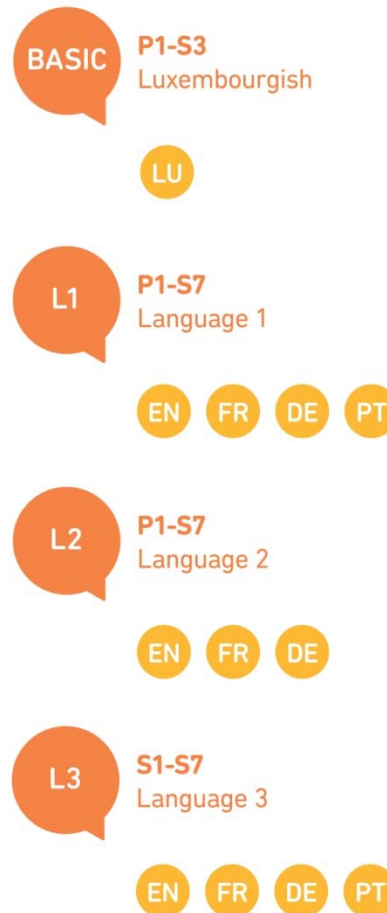
- Choose the lingua franca in the non-linguistic branches
- Same curriculum in the three sections but a different lingua franca from one section to another



# The languages and lingua franca choice

## 2. Choose the languages

- Luxembourgish is compulsory for everyone (P1-S3)
- Constraint: section language = L1 or L2



25/01/2019

# Branches P1 | S1

Primary (P1)	Periods of 30 min	Secondary (S1)	Periods of 45 min
Language 1 (FR-EN-DE-PT)	8	Language 1 (FR-EN-DE-PT)	5
Language 2 (FR-EN-DE)	5	Language 2 (FR-EN-DE)	5
Section language FR/EN	8	Language 3 (FR-EN-DE-PT)	3
Luxembourgish	2	Luxembourgish	2
Mathematics	10	Latin (option)	2
Discovery of the world	2	Mathematics	4
Artistic Education	2	Integrated Sciences	3
Musical Education	2	Human Sciences	3
Physical Education	4	Artistic Education	2
Life and Society	2	Musical Education	2
		Physical Education	2
		Life and Society	2



## Branches VP1 | ACCU

Preparatory way (VP1)	Periods of 45 min	Integration classes (Accu)	Periods of 45 min
Language A (FR-EN-DE-PT)	3	Language 1 (FR-EN-DE-PT)	3
Language B (FR-EN-DE-PT)	3	Language 2 (FR-EN)	14
Luxembourgish	2	Luxembourgish	2
Mathematics	5	Mathematics and science	5
Physical Education	2	Physical Education	2
General Culture	2	Artistic Education	2
Life and Society	2	Musical Education	2
Workshops	14	Civic and social Education	1
		Life and Society	2

# School offer 2019/2020

## Primary offer

Section	P1	P2	P3	P4	P5
English-speaking	Differdange & Esch	Differdange & Esch	Differdange & Esch	Differdange & Esch	Esch
French-speaking	Differdange & Esch	Differdange & Esch	Differdange & Esch	Differdange & Esch	Esch
German-speaking	-	-	-	-	-



25/01/2019

13



**EIDE.LU**



# School offer 2019/2020

## Secondary offer

Section	S1	S2	S3	S4	S5
English-speaking	Differdange	Differdange	Differdange	Differdange	-
French-speaking	Differdange & Esch	Differdange & Esch	Differdange & Esch	Differdange	-
German-speaking	Esch	Esch	Esch	-	-

Thank you for your attention.



LE GOUVERNEMENT  
DU GRAND-DUCHÉ DE LUXEMBOURG  
Ministère de l'Éducation nationale,  
de l'Enfance et de la Jeunesse



MIR  
SCHWÄTZEN  
ZUKUNFT  
INTERNATIONALE ERZIEHUNGSPROJEKTE



ÉCOLE  
INTERNATIONALE  
Differdange &  
Esch-sur-Alzette

[eide.lu](http://eide.lu) | [info@eide.lu](mailto:info@eide.lu)

# Notre mission

**Notre mission est de dispenser une éducation multilingue et multiculturelle de qualité centrée sur l'épanouissement de l'élève. Reposant sur les valeurs de respect et d'ouverture sur le monde, l'EIDE prépare des citoyens européens de demain.**

25/01/2019

16



**EIDE.LU**

# Nos valeurs

- Ecole ouverte sur le monde
- Ecole innovante
- Professionnalisme
- Respect des différences
- Esprit d'équipe
- Succès et ambition
- Responsabilité
- Qualité
- Engagement
- Préparer des citoyens européens responsables et autonomes
- Bien-être à l'école

