

WELCOMING NEWLY ARRIVED PUPILS IN LUXEMBOURG



1

APPOINTMENT

Appointment request

made by the family (*before arriving in Luxembourg: possibility to contact the SIA*)



2

SUPPORT

The SIA assists the family

with an intercultural mediator if necessary

- *Information on the Luxembourg school system*
- *Gathering of information on the pupil's previous schooling*
- *Creation of a file for each child in the family*



3

GUIDANCE

Orientation suggestion

towards an adequate class



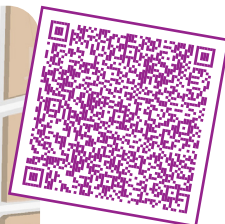
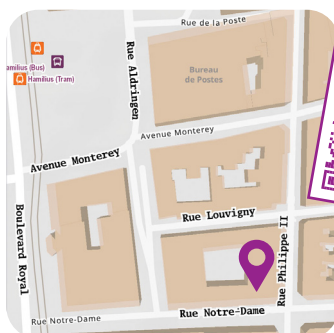
4

MONITORING

Monitoring of the pupil
during two years



38, rue Philippe II
L-2340 Luxembourg
+352 247-75274
secretariat.sia@men.lu





WELCOME TO THE LUXEMBOURGISH SCHOOL



Pupils between
4 and 24 years

Dear parents,

You have just arrived or you are planning to relocate to Luxembourg?

The Ministry of Education is here to support you
when it comes to the schooling of your child.

The **Service de l'intégration et de l'accueil scolaires** (SIA)
(School Integration and Welcoming Service)

- welcomes all families who have recently arrived in Luxembourg
- offers information and counseling for the pupils and their parents on all questions related to the Luxembourgish school offer
- provides an individual monitoring during two years.

To benefit from the welcoming, counselling and monitoring services offered by SIA, you can make an appointment by scanning the following QR code:



*Appointments can be made at the SIA
offices in Luxembourg City or by video
conference, if necessary.*

*The meeting request form is available in:
Arabic, Bosnian/Croatian/Montenegrin/
Serbian, Chinese, English, Farsi, French,
German, Portuguese, Russian, Spanish,
Tigrinya/Eritrean and Ukrainian.*